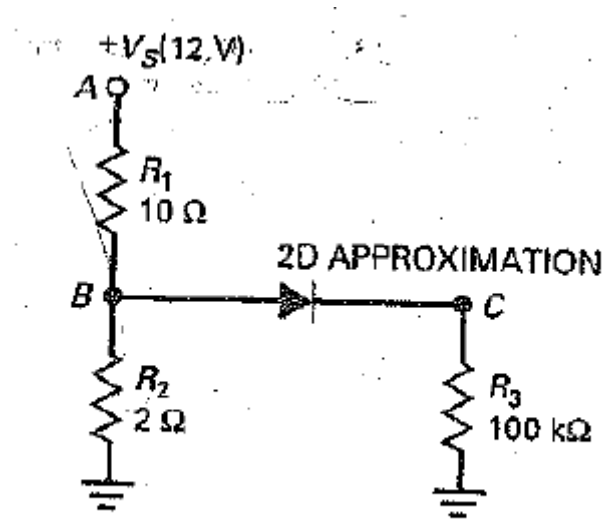


For each independent variable increase, determine what will be response of the dependent variables for the following circuit. Use 2<sup>nd</sup> approximation for diode.



Independent variables:  $V_S$ ,  $R_1$ ,  $R_2$ ,  $R_3$ ,  $V_k$

Dependent variables:  $V_a$ ,  $V_b$ ,  $V_c$ ,  $I_1$ ,  $I_2$ ,  $I_3$ ,  $P_1$ ,  $P_2$ ,  $P_3$ .

Also calculate values of all the dependent variables for a 10% increase in all the independent variables.