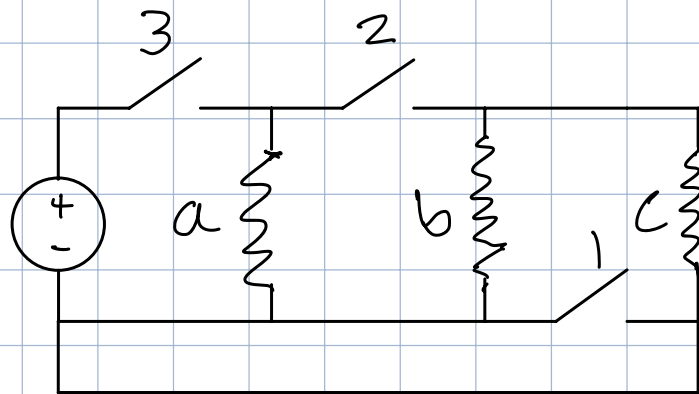


SW			LED			
1	2	3	a	b	c	
0	0	1	1	1	1	1. series
0	1	1	1	0	0	2. a only
1	0	1	0	0	1	3. c only
1	1	1	1	1	1	4. Parallel

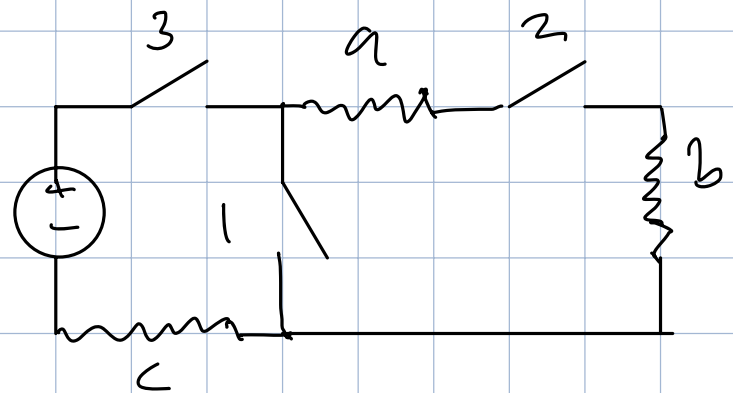
• SW 3 = ON

• SW 2 \rightarrow a

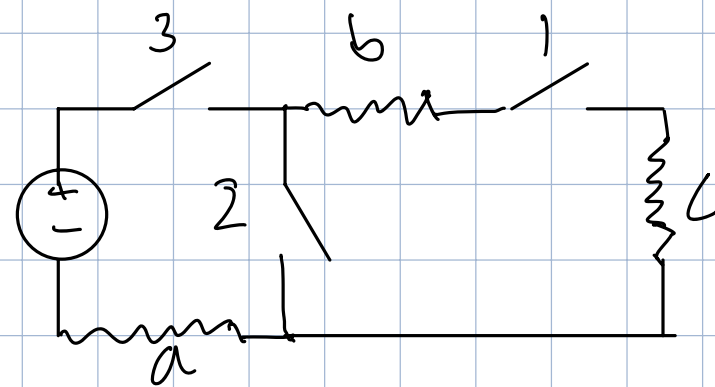
• SW 1 \rightarrow c



Satisfies S & P



Satisfies 3, c only



Satisfies 2, a only