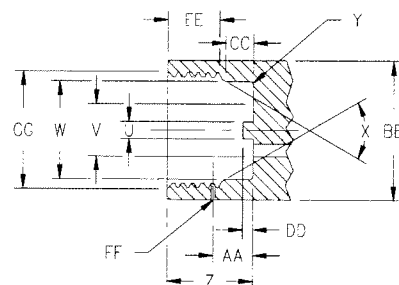
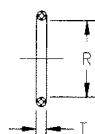
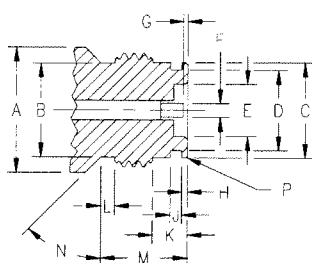
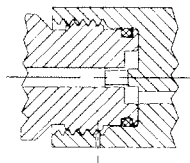


Table 2—Alphabetical list of gases and connections assigned

GAS		STANDARD	LIMITED STANDARD
Carbon Dioxide (R744)	Threaded	320	
	Yoke	940	
	Refrigerated Liquid Withdrawal	622	
	Refrigerated Liquid Cylinder Vent Connection	295	622
	Ultra High Integrity	716	
	Small Cylinder Service (up to 1800 psig, 12 410 kPa) <sup>5)</sup>	323	
Carbonic Acid: <i>See Carbon Dioxide</i>			
Carbon Monoxide		350	
	Ultra High Integrity	724	
Carbon Oxysulfide: <i>See Carbonyl Sulfide</i>			
Carbon Tetrafluoride: <i>See Tetrafluoromethane</i>			
Carbonyl Chloride: <i>See Phosgene</i>			
Carbonyl Fluoride		660	
Carbonyl Sulfide		330	
Chlorine	Threaded		660 <sup>4)</sup>
	Yoke	820, 820C	
	Ultra High Integrity	728	
Chlorine Pentafluoride		670	
Chlorine Trifluoride		670	
	Ultra High Integrity	728	
1-Chloro-1, 1-difluoroethane (R142b)		510	
Chlorodifluoromethane (R22)		660	165, 182
Chloroethane: <i>See Ethyl Chloride</i>			
Chloroethylene: <i>See Vinyl Chloride</i>			
Chlorofluoromethane (R31)		510	
Chloroheptafluorocyclobutane (RC317)		660	165, 182
Chloromethane: <i>See Methyl Chloride</i>			
Chloropentafluoroethane (R115)		660	165, 182
	Ultra High Integrity	716	
1-Chloro-1, 2, 2, 2-tetrafluoroethane (R124)		660	165, 182
1-Chloro-2, 2, 2-trifluoroethane (R133a)		660	165, 182
Chlorotrifluoroethylene (R1113)		510	
Chlorotrifluoromethane (R13)		660	165, 182, 320
	Ultra High Integrity	716	
Cyanogen		660	
Cyanogen Chloride		660	
Cyclobutane		510	
Cyclopropane	Threaded	510	
	Yoke	920	
Deuterium		350	
	Ultra High Integrity	724	
Deuterium Chloride		330	
Deuterium Fluoride		670	660
Deuterium Selenide		350	660
Deuterium Sulfide		330	
Diborane		350	
	Ultra High Integrity	632	
Dibromodifluoroethane		660	165, 182
Dibromodifluoromethane (R12B2)		660	165, 182
1, 2-Dibromotetrafluoroethane (R114B2)		660	165, 182
1, 2-Dichlorodifluoroethylene		660	165, 182
Dichlorodifluoromethane (R12)		660	165, 182
	Ultra High Integrity	716	

**.825-14NGO-RH-EXT**

LIMITED STANDARD CYLINDER VALVE OUTLET CONNECTION FOR  
PRESSURES UP TO 1800 psig (12 410 kPa)<sup>①</sup> FOR  
(Small Cylinder Service)  
Carbon Dioxide (R744)



## VALVE OUTLET

THREAD	.825-14NGO-RH-EXT	
MAJOR DIA.	.8250-.8200	(20.995-20.828)
PITCH DIA.	.7786-.7750	(19.776-19.685)
MINOR DIA.	.7374 Max.	(18.729) Max.
OUTLET DIA.	A .900 Min.	(22.86) Min.
UNDERCUT DIA.	B .675	(17.15)
SHANK DIA.	C .694-.685	(17.63-17.40)
GROOVE DIA.	D .577 ±.003	(14.66 ±0.08)
BORE DIA.	E .200 ±.010	(5.08 ±0.25)
PIN DIA.	F .100	(2.54)
PIN CLEARANCE	G 0-.030	(0-0.76)
SHOULDER LENGTH	H .040	(1.02)
GROOVE LENGTH	J .085 ±.003	(2.16 ±0.08)
SHANK LENGTH	K .250	(6.35)
UNDERCUT LENGTH	L .100	(2.54)
LENGTH	M .625 Min.	(15.88) Min.
ANGLE	N 0°-45°	
CHAMFER	P .015 x 45°	(0.38)

## O-RING

INSIDE DIA.	R .551 ±.007	(14.00 ±0.18)
DIAMETER	T .070 ±.003	(1.78 ±0.08)

## CYLINDER INLET

THREAD	.830-14NGO-RH-INT	
MINOR DIA.	.7527-.7604	(19.119-19.314)
PITCH DIA.	.7836-.7872	(19.904-19.994)
MAJOR DIA.	.8300 Min.	(21.082) Min.
PROBE DIA.	U .125	(3.18)
HOLE DIA.	V .376 Max.	(9.55) Max.
BORE DIA.	W .694-.703	(17.63-17.85)
ANGLE	X 60°	
BORE RADIUS	Y .025 Max.	(0.64) Max.
BORE LENGTH	Z .620	(15.75)
BL. HOLE DIST.	AA .288	(7.31)
BOSS DIA.	BB 1.00 Min.	(25.4) Min.
SEALING LENGTH	CC .200	(5.08)
PROBE HEIGHT	DD .075	(1.91)
THREAD LENGTH	EE .375-.400	(9.52-10.16)
BL. HOLE DIA.	FF .031 Min.	(0.79) Min.
C/SINK DIA.	GG 90° x .850	(21.59)

All dimensions are in inches (millimeters).

① At 70 °F (21.1°C)