



DOMEX 100XF  
TENSILE STRENGTH 110000PSI  
YIELD STRENGTH 100000PSI  
YIELD STRENGTH WITH SAFETY FACTOR 3 33333PSI

$$P=2871\#$$

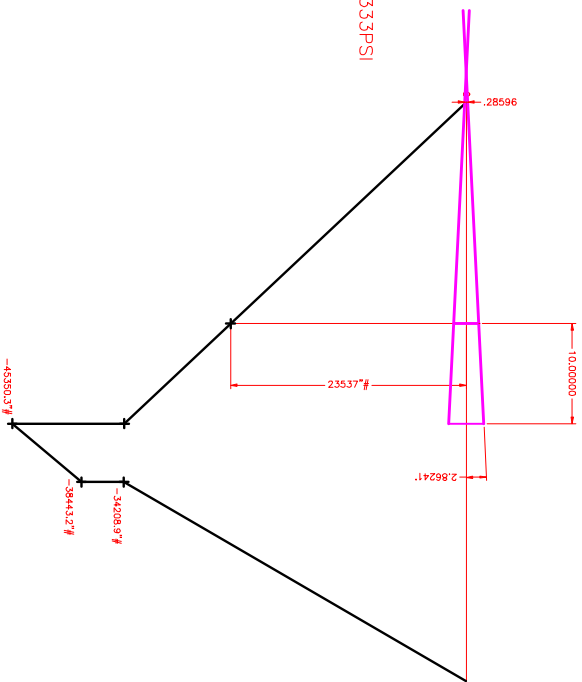
$$M=45350\#\text{'}$$

$$R \pm MC = S_T$$

$$\frac{2871\#}{1.78\text{IN}^2} \pm \frac{45350\#\text{'}\cdot(1.75\text{'})}{2.56\text{IN}^4} = S_T$$

$$1613\text{PSI} + 31001\text{PSI} = S_T = 32614\text{PSI}$$

BEAM 1 WILL BE A 3-1/2 X 2 X 3/16" FORMED TUBE, STRAIGHT ACROSS.



DOMEX 100XF  
TENSILE STRENGTH 110000PSI  
YIELD STRENGTH 100000PSI  
YIELD STRENGTH WITH SAFETY FACTOR 3 33333PSI

$$P=2871\#$$

$$M=45350\#\text{'}$$

$$R \pm MC = S_T$$

$$\frac{2871\#}{1.40\text{IN}^2} \pm \frac{23537\#\text{'}\cdot(1.25\text{'})}{1.08\text{IN}^4} = S_T$$

$$2051\text{PSI} + 27242\text{PSI} = S_T = 29293\text{PSI}$$

BEAM 1 WILL BE A 2-1/2 X 2 X 3/16" FORMED TUBE, 10" FROM THE RIGHT.