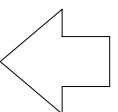


AIR INLET



THIRD FAILURE

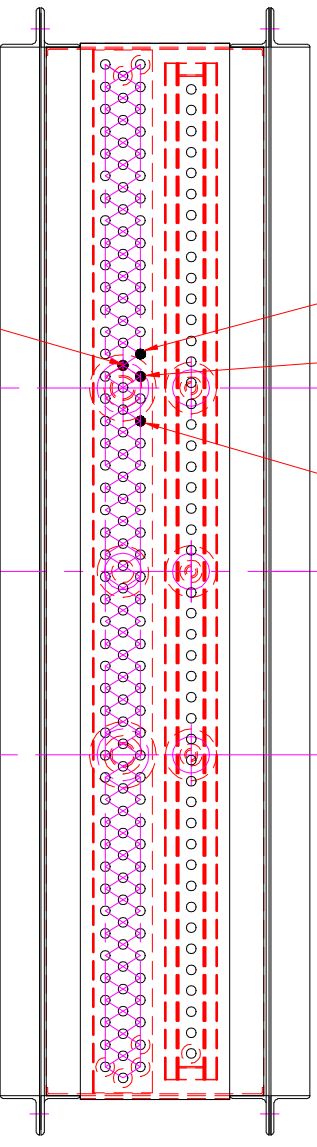
14TH TUBE FROM LEFT-1st ROW

SECOND FAILURE

15TH TUBE FROM LEFT-1st ROW

FIRST FAILURE

17TH TUBE FROM LEFT-1st ROW



THIRD FAILURE

14TH TUBE FROM LEFT-2nd ROW

STEAM INLET (TOP)

CONDENSATE OUT (BTM)

STEAM INLET (TOP)

CONDENSATE OUT (BTM)

AIR OUTLET

