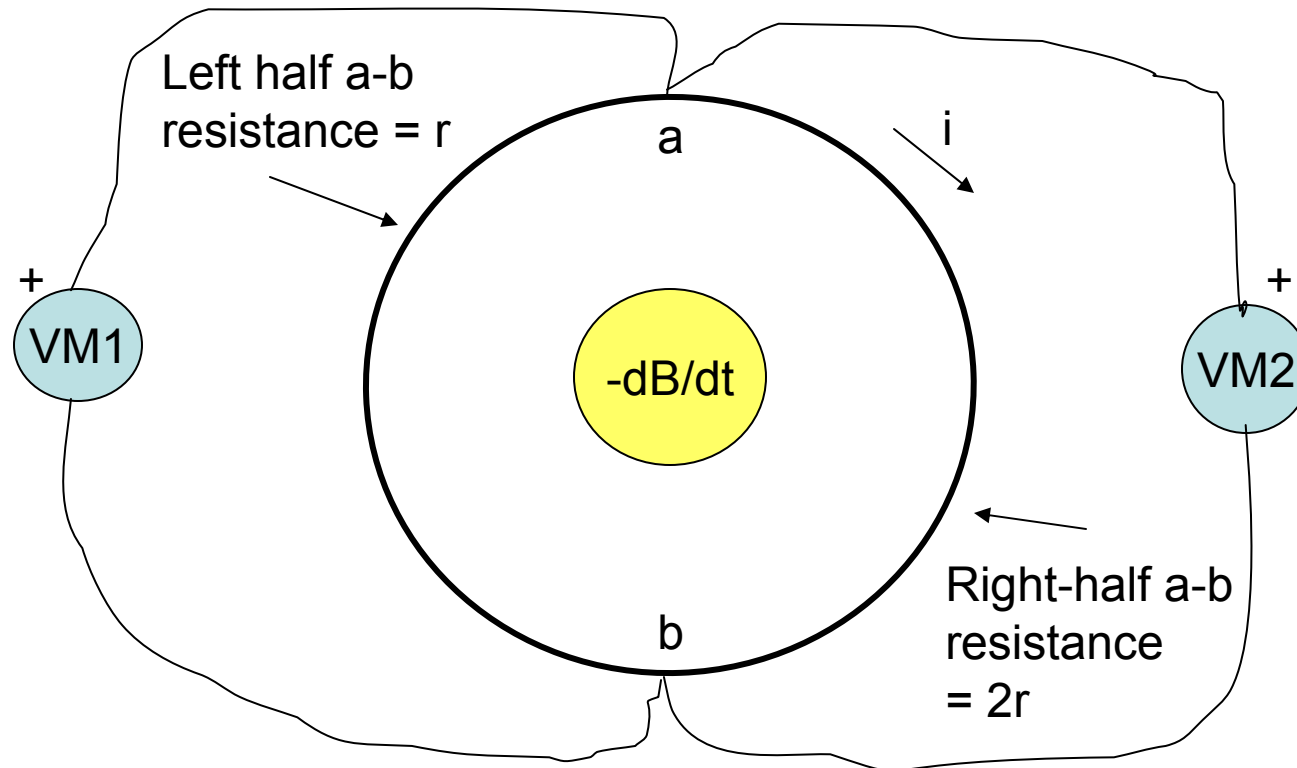


$$\text{Current } i = \text{emf}/3r$$

$$\text{emf} = -\partial\phi/\partial t$$



Single-turn coil with dissimilar resistances as shown.
 What do voltmeters VM1 and VM2 read?
 What is $V_a - V_b$? There can only be one answer!
 Notice that neither voltmeter circuit surrounds any B field.