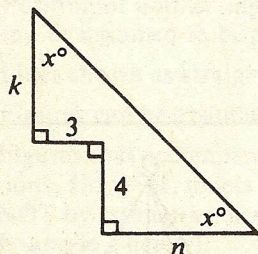


- A if the quantity in Column A is greater;
 B if the quantity in Column B is greater;
 C if the two quantities are equal;
 D if the relationship cannot be determined from the information given.

Column A

Column B



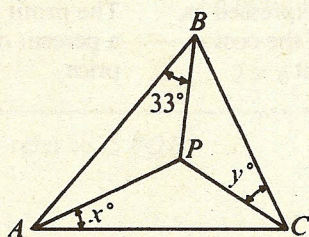
9. k n

A student has test scores of 85, x , and y , respectively, and an average (arithmetic mean) score of 95 on the three tests.

10. The average (arithmetic mean) of x and y 100

$$y^2 + 4y - 12 = 0$$

11. y^2 30

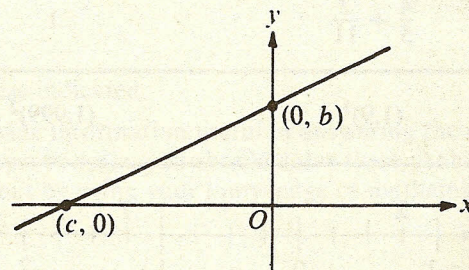


Segments PA , PB , and PC are the angle bisectors of $\triangle ABC$.

12. $x + y$ 57

Column A

Column B

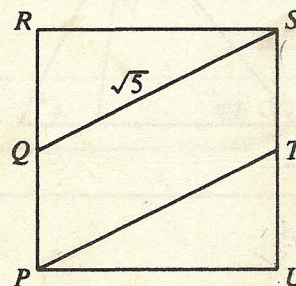


The line $y = ax + b$ is graphed on the rectangular coordinate axes.

13. a $\frac{b}{-c}$

For all numbers n , $n^* = 32 - n$.

14. $(n^*)^*$ n



Q and T are the midpoints of opposite sides of square $PRSU$.

15. The area of region $PQST$ $\frac{3}{2}$

GO ON TO THE NEXT PAGE