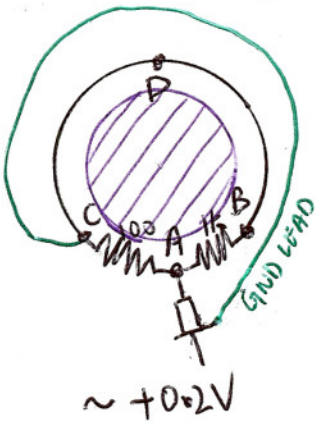
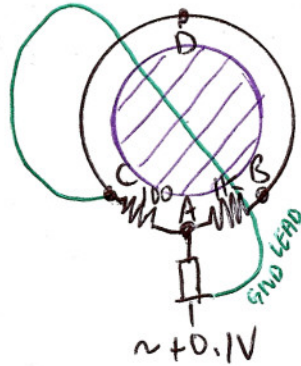


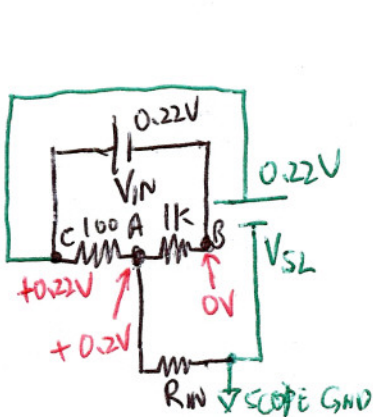
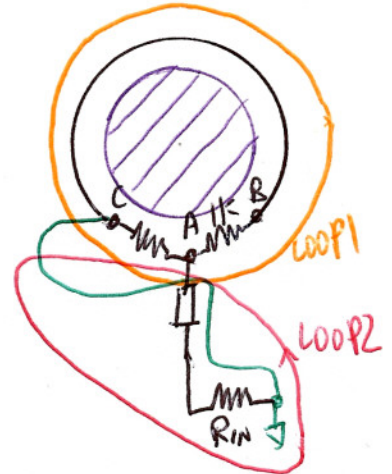
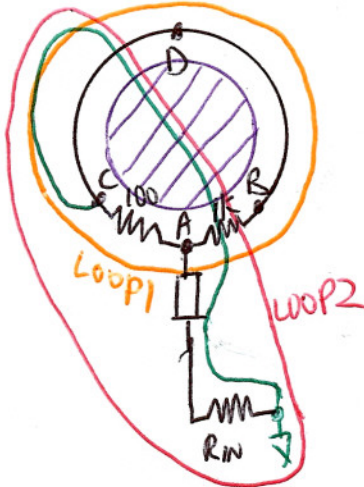
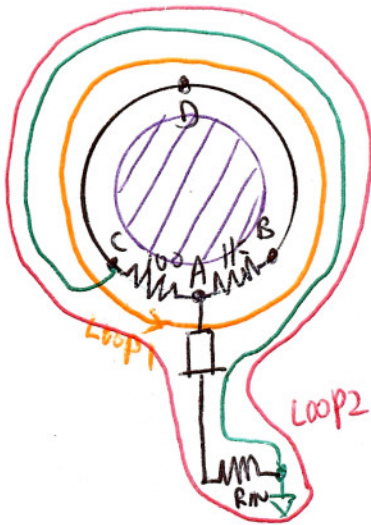
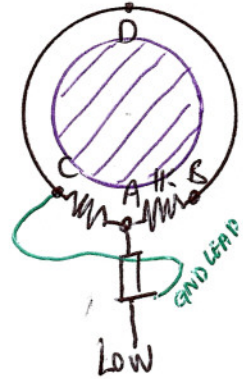
CONDITION 1



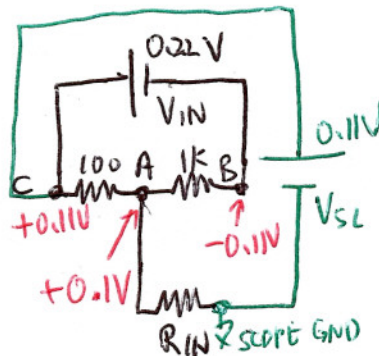
CONDITION 2



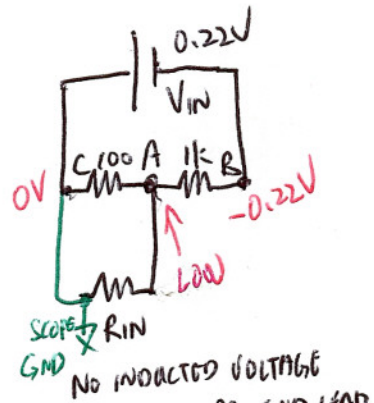
CONDITION 3



SCOPE GND LEAD CIRCLE
ALL FLUX
 $\Rightarrow V_{SL} = V_{IN} = +0.22V$



SCOPE GND LEAD CIRCLE
HALF THE FLUX
 $V_{SL} = +0.11V$



$V_{SL} = 0$