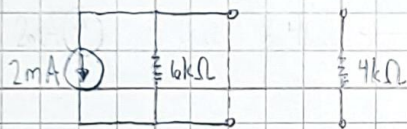
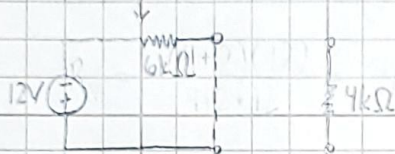
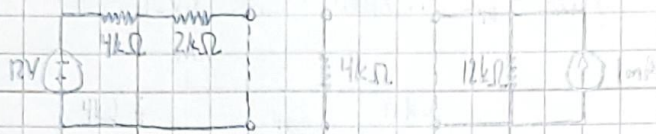
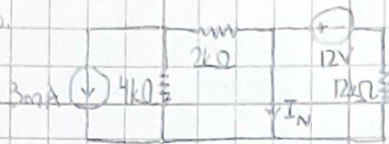


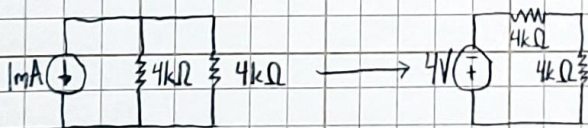
5. Same as #2

6.



$$I_N = -2mA \parallel 1mA = -1mA$$

$$R_N = 6k\Omega \parallel 12k\Omega = 4k\Omega$$

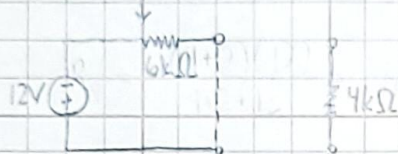
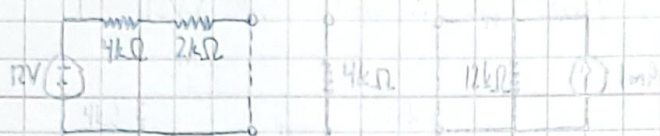
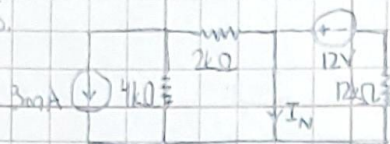


$$I = -4V / 8k\Omega = -0.5mA$$

$$V_{AB} = -0.5mA \cdot 4k\Omega = -2V$$

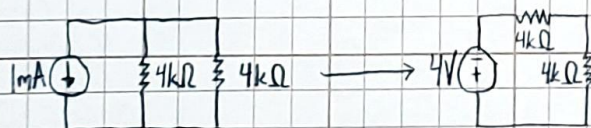
5. Same as #2

6.



$$I_N = -2\text{mA} \parallel 1\text{mA} = -1\text{mA}$$

$$R_N = 6\text{k}\Omega \parallel 12\text{k}\Omega = 4\text{k}\Omega$$



$$I = -4\text{V} / 8\text{k}\Omega = -0.5\text{mA}$$

$$V_{AB} = -0.5\text{mA} \cdot 4\text{k}\Omega = -2\text{V}$$