

Cartridge Valves Technical Information

Accessories

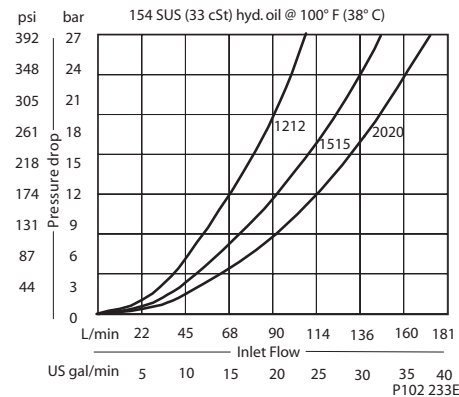
X05-FD104 traction manifold

OPERATION

This valve provides electrically actuated traction control for hydrostatic systems with one pump and four motors in parallel. In normal operation, fluid passes freely through the valve. When the solenoid is energized, fluid is forced through the flow divider/combiners. The result is equal flow to all four motors, preventing wheel spin or motor over speed.

PERFORMANCE

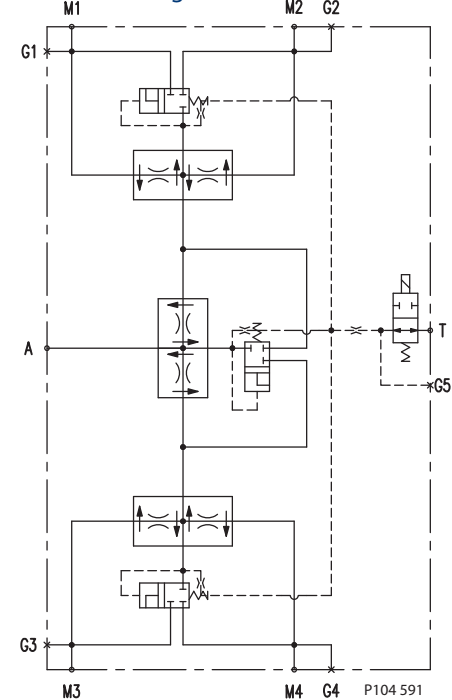
Performance curve



Specifications

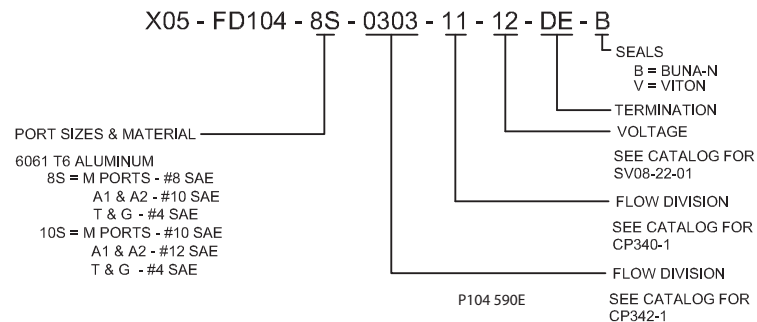
Rated pressure	230 bar [3300 psi]
Rated flow at 7 bar [100 psi]	45 l/min [12 US gal/min]
Weight	8.74 kg [19.74 lb]

Schematic diagram



Accessories
 X05-FD104

ORDERING INFORMATION



DIMENSIONS

See next page.